



# Superior Access Solutions

info@sa-solutions.com  
www.sa-solutions.com



## Centralized Network Management

**Superior Access Solutions POINT** combines powerful network monitoring and easy-to-use management on a single base software platform using SNMPv1, v2c, and v3 protocols. A user has the ability to view an entire network's health and status on a single screen. SAS POINT provides numerous functions including system and device logging, back up and configuration, and user activity monitoring, ensuring an administrator receives an overview of all actions and events within the network.

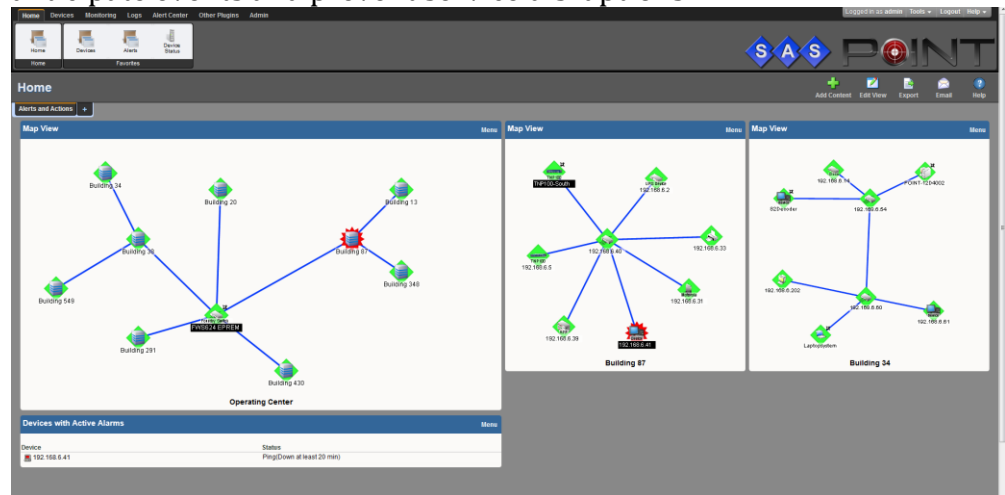
## Full Network Element Integration

POINT eases operations by unifying the management of network elements. POINT's hardware/software platforms allow real-time access, reporting and control of virtually every Ethernet/IP device, including local and remote network devices and systems.

With POINT, administrators can securely manage and provision services dynamically across multiple remote sites. Alarm notifications resolve network issues faster, reduce costly remote site visits, and help service providers anticipate events and prevent service disruptions.

### FEATURES and BENEFITS

- Provides visibility and connectivity to local and remote network elements
- Vendor agnostic – can address virtually any Ethernet/IP accessible device
- Web-browser based interface
- Secure, remote communication over IP
- Network polling with database functionality creating trending reports
- Provides archiving and reporting of network element information



## Simplicity

POINT's customizable graphical interfaces provide essential information about devices that may need attention. POINT provides a network map, illustrating the device location within the network. POINT also displays device names and lists associated alarms.

Information furnished by SAS is believed to be accurate and reliable. No responsibility is assumed by SAS for its use. Specifications are subject to change without notice.

Published Date: Apr 2017

21037 Heron Way, Lakeville MN, 55044

Tel 1.952.469.8874

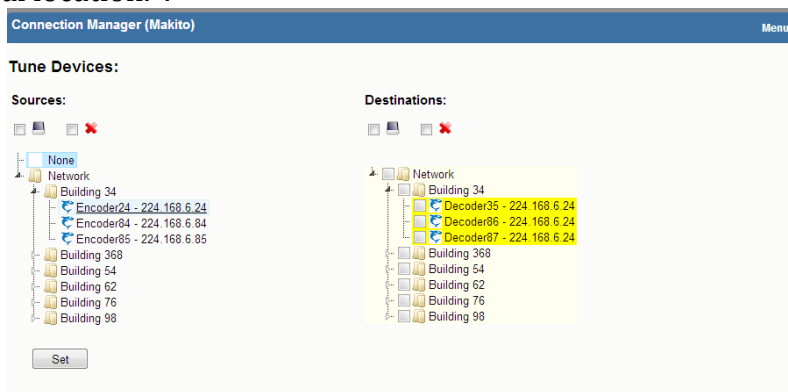
### Enhanced Function Modules

In addition to the base POINT software, Superior Access Solutions provides modules for additional features and capabilities. The optional modules are:

info@sa-solutions.com  
www.sa-solutions.com

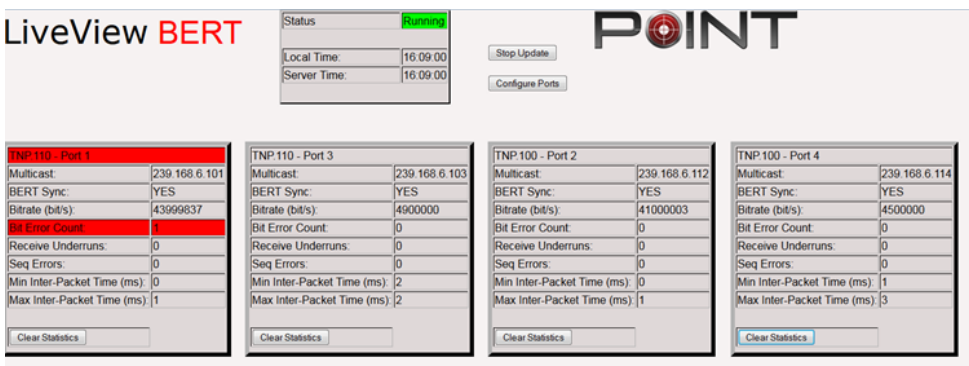
#### Connection Manager

The Connection Manager enables single-click connection for quick and easy device management. Color coding immediately indicates device status -- functional, non-functional, or disabled. Bi-directional highlighting illustrates the corresponding sources and destinations. Source and Destination devices may be grouped by physical location.



#### Live View

Live View is a real-time data viewing and alarming system, allowing for instant network analysis. Live View provides users with the ability to assess live data from anywhere within the network via a web browser. Monitors telemetry devices, switches, and environmental monitors (such as fuel level, humidity, temperature, power distribution, and contact closures).



#### Mission Profile

Mission Profile capability allows Destination configurations to be captured, then quickly restored prior to a mission. This allows mission preparation to be faster and more reliable.