



Superior Access Solutions

info@sa-solutions.com
www.sa-solutions.com

COMMANDER

SDI

SDI Signal Analysis Tool

FEATURES & BENEFITS

Verification of Closed Captioning data

Deep Analysis Toolset to address any line in the HANC/VANC

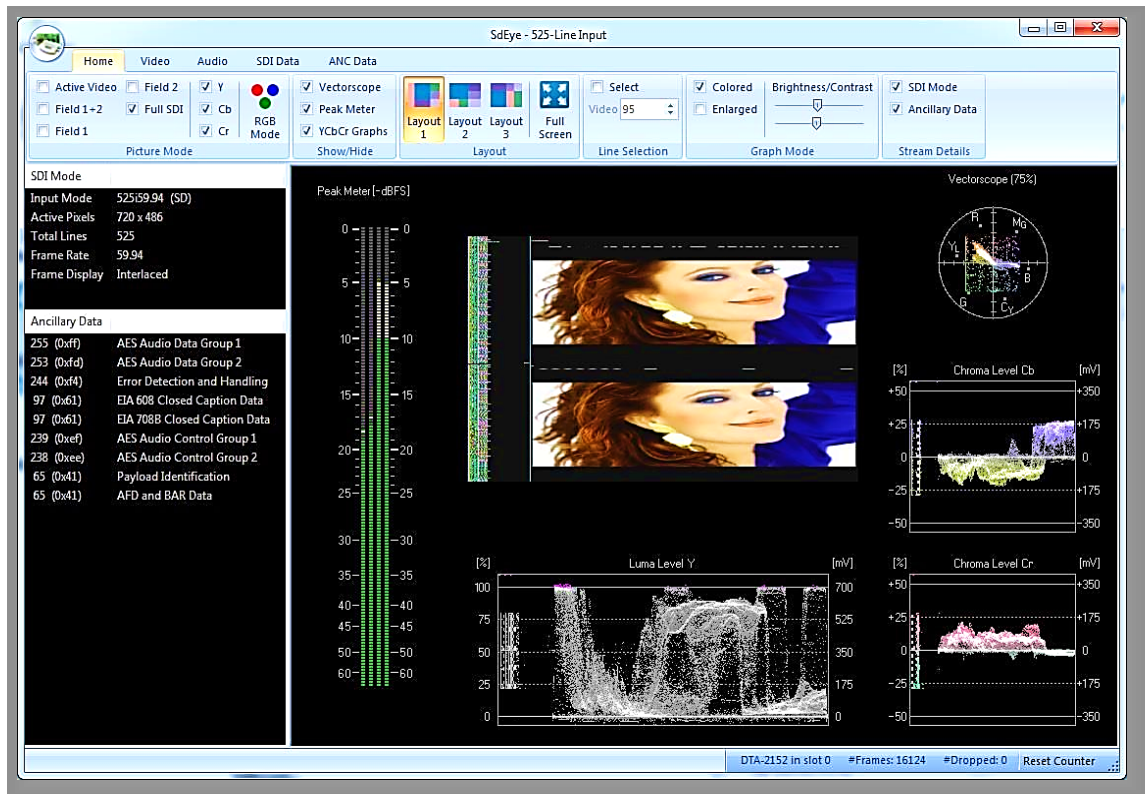
Full frame capture and play-out

Hardware scaler (1/4 or 1/16) allowing user to watch video at a reduced load

Information furnished by SAS is believed to be accurate and reliable. No responsibility is assumed by SAS for its use. Specifications are subject to change without notice. Superior Access Solutions, Inc 2014. ALL RIGHTS RESERVED

COMMANDER SDI performs powerful analysis of SDI signals and displays the results in user-defined tables and graphs.

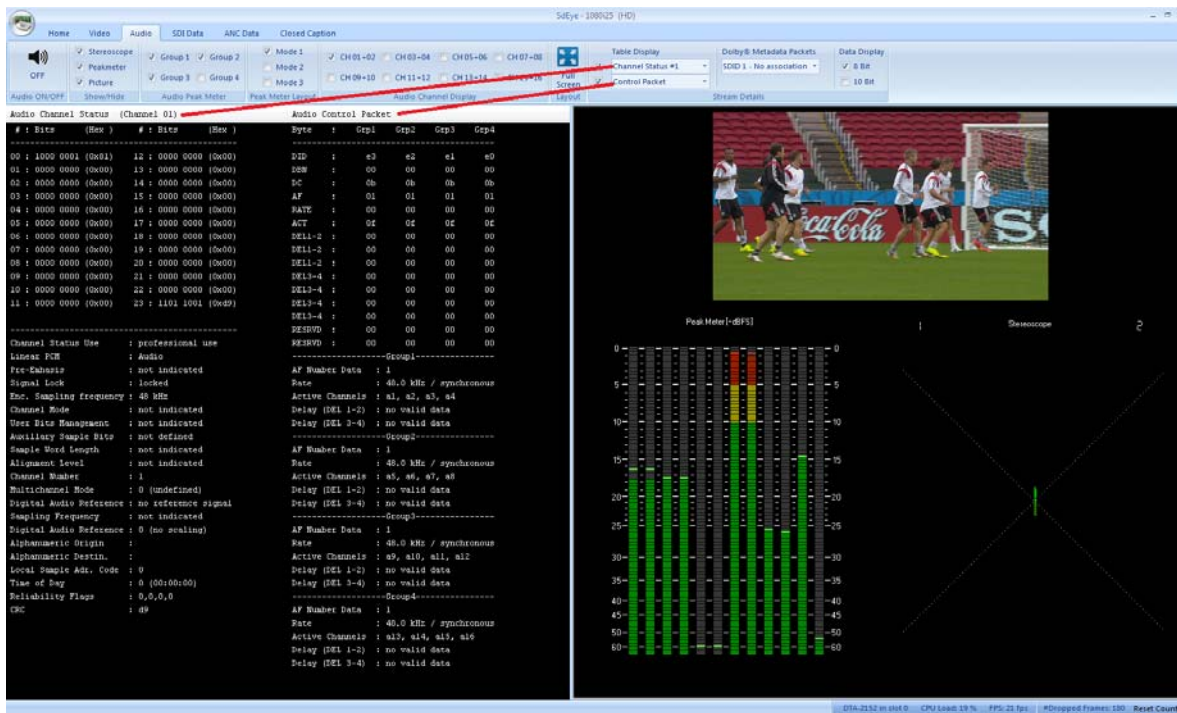
- Real-time waveform analysis for SD- and HD-SDI signals.
- Stream Out to SDI for monitoring.
- SDI data logging to a CSV log file.
- Picture Display—Top, bottom, interlaced, full frame.
- Waveforms—Y, Cb, Cr, or RGB graphs; Vectorscope; Single Line
- Audio—decoding/display; Peak Meter; Stereoscope.
- List of all ancillary data streams.





COMMNDER SDI's many features include:

- Selecting up to six tables, each with its own dropdown menu of parameters.
- Displaying up to six Text Overlay Boxes.
- Providing Detailed Channel Status and Control Packet Information.
- Decode optional ANC Data DID (Compressed Audio Metadata)
 - This is Standard SMPTE packet—Dolby Stream is untouched.
- Logging Mode records all ANC Data Packets over defined time period.
- Trigger Mode that freezes input stream on selected DID / SDID.
- In addition to decoding SDI devices, also opens DTSDI files.



Specifications

Attributes

Parameter	Value
Physical Layer	SDI (SMPTE259M) HD-SDI (SMPTE 292M)
Connectors	(3x) 75-Ω BNC
Ports	(4x) SDI (In or Out) Genlock Input
Return Loss	≥15dB @ 0 .. 1.5GHz

Part Number

SAS-CMDR-SDI-A001

Supported Formats

Standard	Formats
SMPTE 259M	525i59.94, 625i50
SMPTE 296M	720p23.98, 720p24, 720p25, 720p29.97, 720p30, 720p50, 720p59.94, 720p60
SMPTE 274M	1080p23.98, 1080p24, 1080p25, 1080p29.97, 1080p30, 1080i50, 1080i59.94, 1080i60

Standards Compliance

Standard	Description
SMPTE 291M	Ancillary Data Packet & Space Formatting
SMPTE RP291	Assigned Ancillary Identification Codes
MISB 0605.3	Inserting Time Stamps and Metadata in HD Uncompressed Video